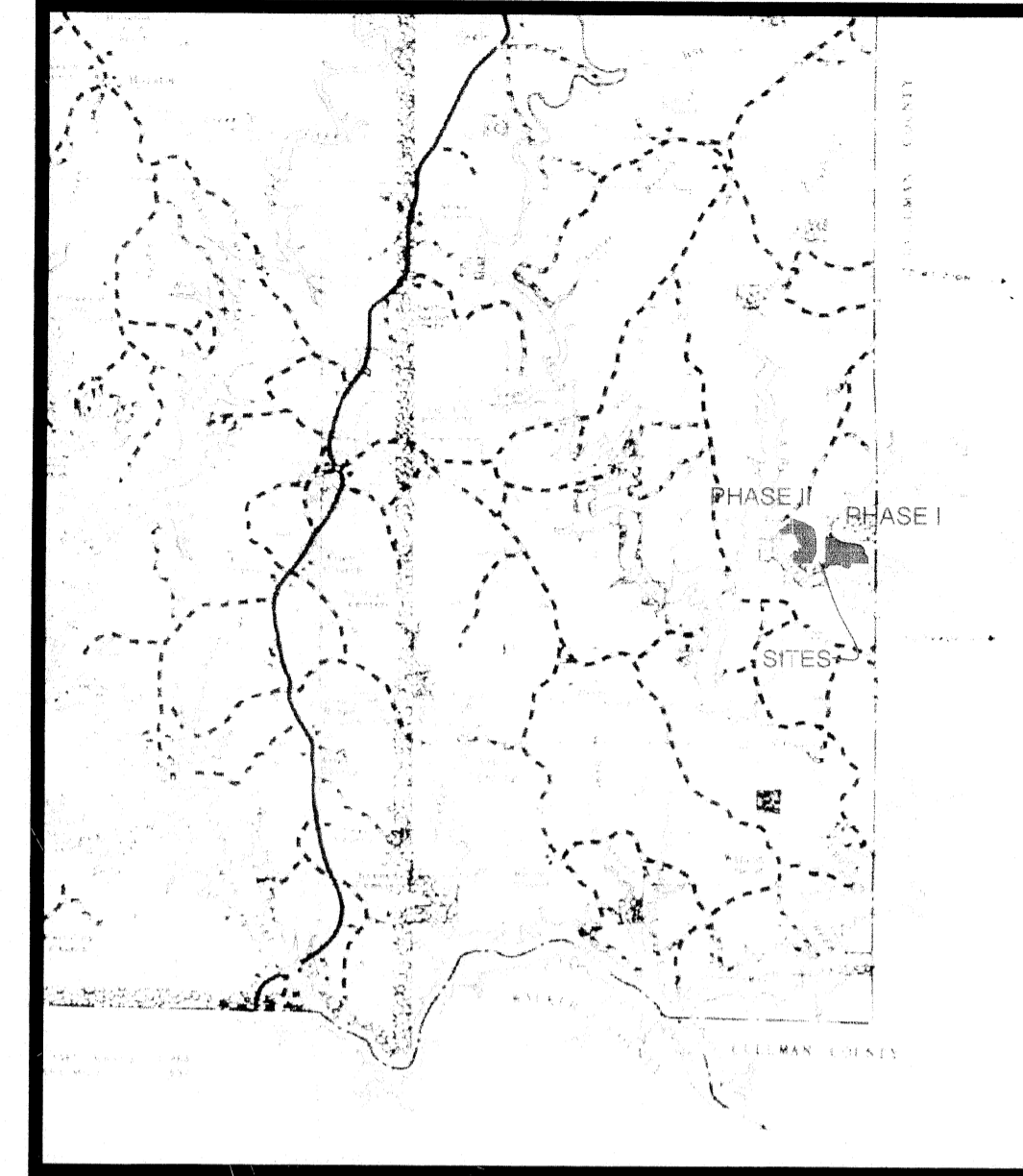


Bondur, E

### VICINITY MAP



### LEGEND

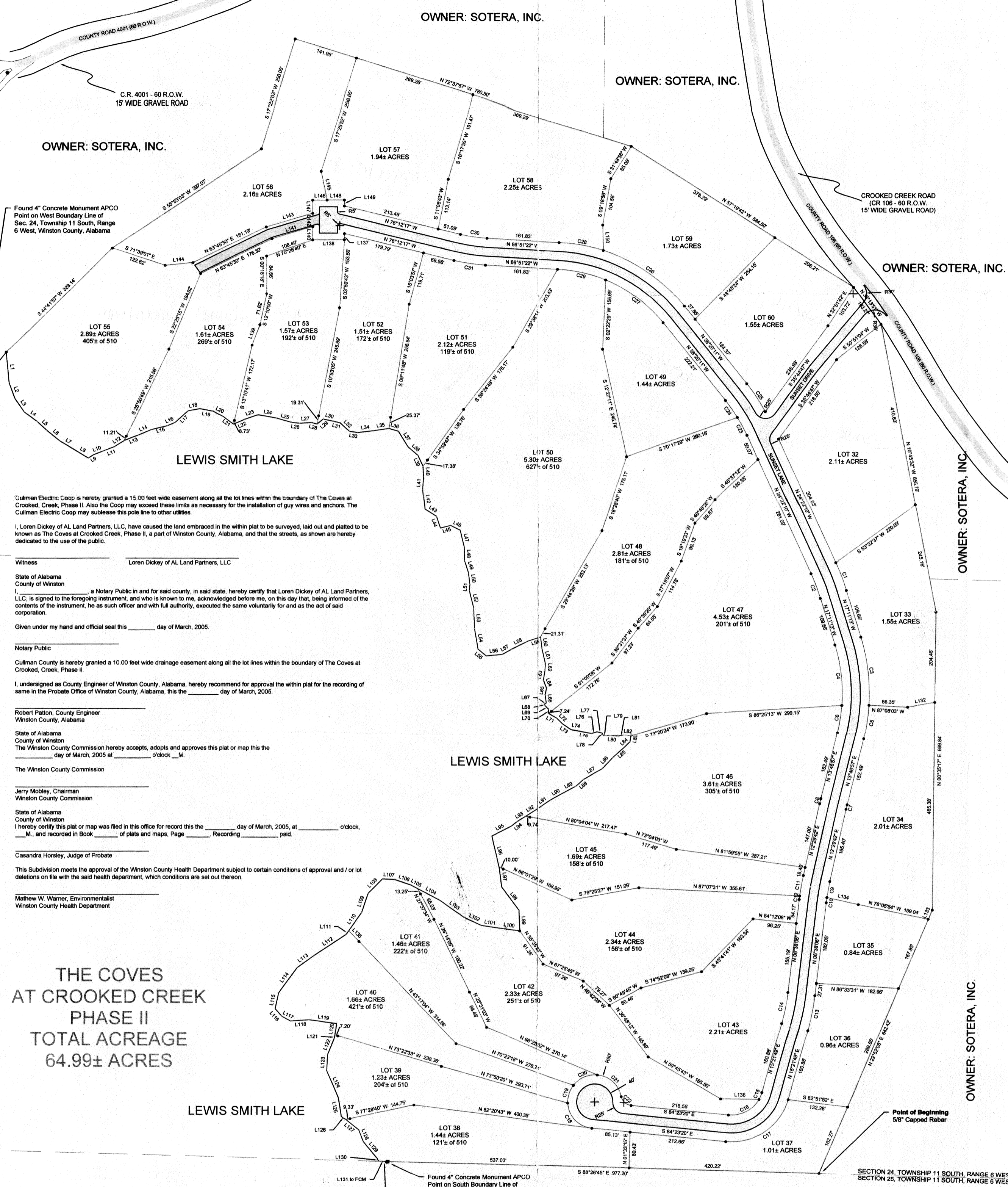
- These standard symbols may be found in the drawing.
- FOUND CORNER
  - SET CAPPED REBAR
  - CONCRETE MONUMENT
  - OPEN PIPE
  - CAPPED PIPE
  - IRON CONTROL
  - CORNER NOT SET DUE TO HINDRANCE
  - POWER POLE
  - WATER METER
  - DEED LINE
  - 510 ELEVATION OF LEWIS SMITH LAKE
  - ADJACENT DEED LINE
  - RIGHT-OF-WAY (60')
  - EASEMENT LINE (30')
  - APCO SETBACK (522')
  - EXISTING GRAVEL/DIRT ROAD
  - PROPOSED GRAVEL COUNTY ROAD
  - (D) DEED
  - (M) MEASURED
  - (R) RECORD
  - (P) PLAT
  - POC POINT OF COMMENCEMENT
  - POB POINT OF BEGINNING
  - AC ACRES
  - RAW RIGHT-OF-WAY
  - SEC SECTION
  - T TOWNSHIP
  - R RANGE



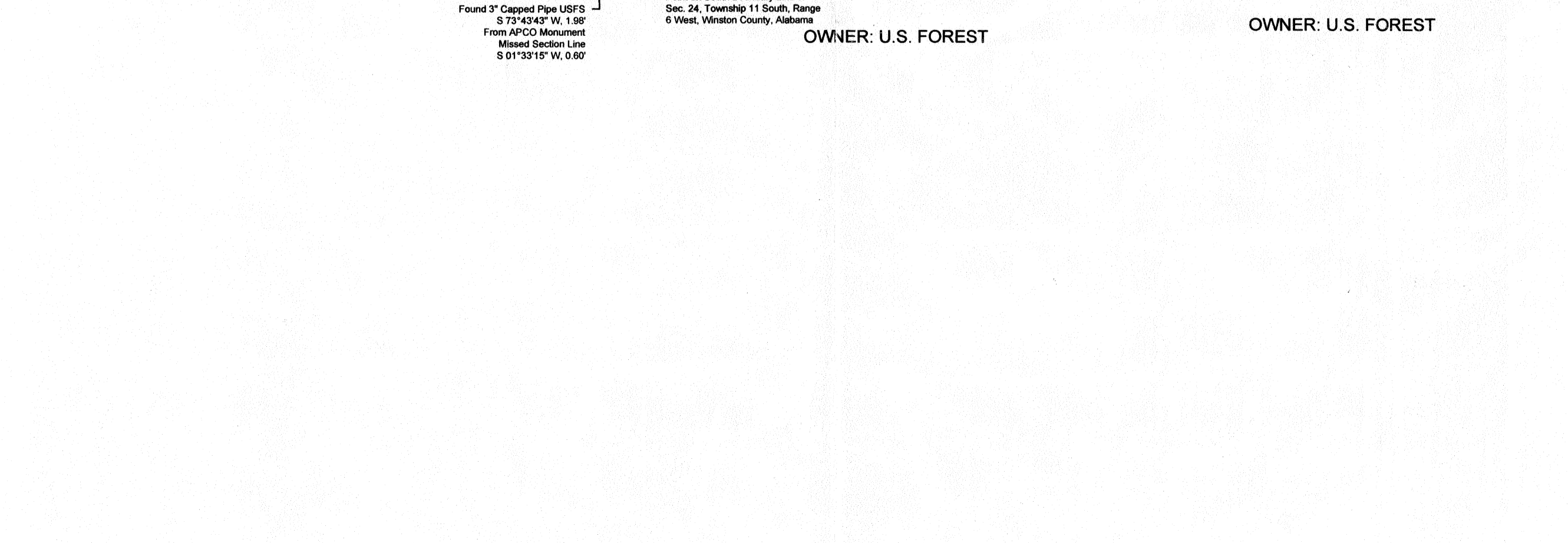
BEARINGS ARE BASED ON GEODETIC NORTH



### THE COVES AT CROOKED CREEK PHASE I TOTAL ACRES 66.01± ACRES



### THE COVES AT CROOKED CREEK PHASE II TOTAL ACRES 64.99± ACRES



SECTION 24, TOWNSHIP 11 SOUTH, RANGE 6 WEST

23 24  
26 25

APPROVED BY: JDM  
 DATE: 03/10/05  
 DRAWN BY: JDM  
 DATE: 03/10/05  
 DIV: THE COVES AT CROOKED CREEK  
 SCALE: 1" = 160'

AL LAND PARTNERS, LLC  
 SECTIONS 24 & 25 TOWNSHIP 11 SOUTH, RANGE 6 WEST  
 WINSTON COUNTY, ALABAMA

MINIMUM CLEARANCE: 1" = 500'

ABALMA REGISTERED PROFESSIONAL LAND SURVEYOR J. DAVID MC

DSM DESIGN GROUP, LLC  
 ENGINEERING SURVEYING  
 1000 W. ALABAMA AVE.  
 JASPER, ALABAMA 35895  
 TELEPHONE: (205) 221-6292